

A few notes about PDF patterns from Designs by Jude. . . .

This PDF pattern requires legal size paper (8.5" x 14") or A4 size paper (8.27" x 11.69", 210mm x 297mm). It will **not** print on standard letter.

Patterns containing larger pieces will need to be taped together before cutting out the fabric.

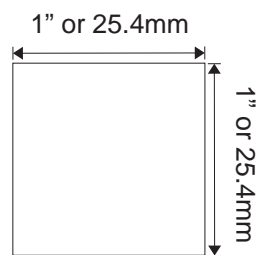
Be advised that this document needs to be printed to it's original scale. Please ensure that the printing options below are **not** selected.

Do Not: Rotate and Center, Fit to Page, Reduce to Fit or adjust the scale of this document.

Refer to the scale marker below to ensure that this copy is printed at the correct scale.

This PDF pattern is not licensed for commercial use and may not be shared, duplicated or distributed.

2016 Designs by Jude, All RIGHTS RESERVED. Personal use only. Not licensed for commercial use.



Designs by Jude

Shining Hour

for DeefAnna



designed by
Gary Fletcher

Dd108
\$12.95us

Designs by Jude
Shining Hour
For DeeAnna Denton

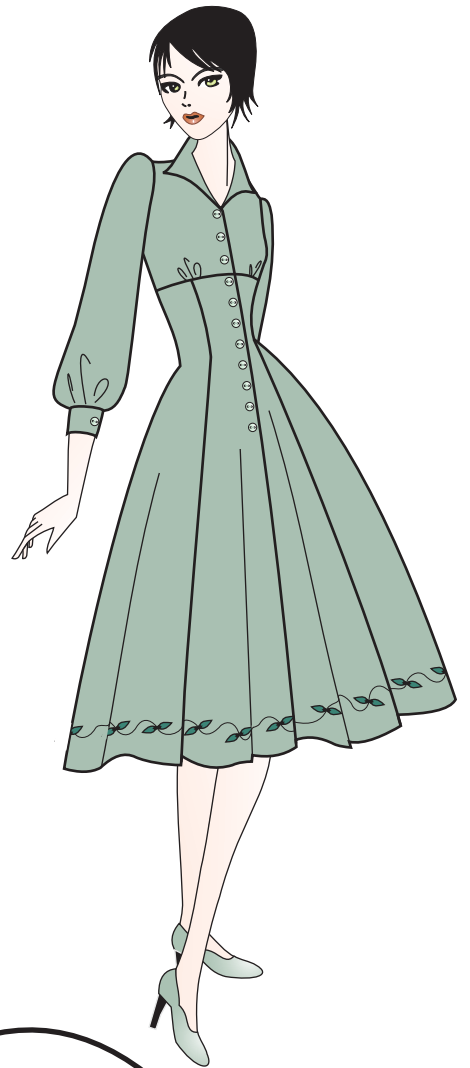
Fabric: Lightweight cottons, calicos, shirting and silks

Notions: (5) ¼" snap sets, (13) 3/16" buttons, matching thread

Instructions

- 1) Place pattern on fabric following the grain-lines. Cut number of pieces indicated marking notches and dots.
- 2) This is a semi-lined dress; raw edges and seams may be finished with an overlock stitch or zigzag stitch after each step.
- 3) Right sides together, sew bodice front to bodice front along raw edges of collar, matching notches and following the stitch line as indicated on the pattern. Press seam allowance open. Repeat this step for bodice front lining.
- 4) Right sides together, sew bodice front to bodice back along raw edges of shoulders and collar, stopping at dot and rotating the needle. Be sure to center the back seam of the collar with the notch in bodice back. Repeat this step for lining.
- 5) Right sides together, sew bodice lining to bodice along raw edges of center front and collar. Clip curves and grade seam allowance. Turn bodice right side out and press finished edges smooth.
- 6) Gather back bottom raw edge of bodice, between notches. Gather front bottom raw edges of bodice between notches.
- 7) Ease each sleeve cap between dots. Right sides together sew notched raw edges together, stopping at dot. Press seam allowance open, including sleeve vent. Gather bottom raw edge of sleeve between notches.
- 8) Using fold lines on cuff pattern as a guide, turn side and bottom raw edges of cuff under, wrong sides together and press. Right sides together sew gathered edge of sleeve to raw edge of cuff, between notches. Wrong sides together, fold cuff in half lengthwise and secure folded edge of cuff to inside of sleeve, concealing gathered raw edges of sleeve and cuff. This step should be performed using a hand needle and thread.
- 9) Sewing in the round, right sides together sew raw edges of sleeve to bodice armhole. This step should be performed using a hand needle and thread.
- 10) Right sides together sew pleat in dress back, stopping at dot. Center pleat to seam line and press. This is an inverted pleat with fold lines centered to seam.
- 11) Right sides together sew dress side backs to dress back along notched raw edges. Right sides together, sew dress side fronts to dress front along notched raw edges. Right sides together, sew dress front to dress back along notched side raw edges.
- 12) Right sides together, pin bottom raw edge of bodice to top raw edge of skirt, matching side seams and finished front edge of bodice to notch. Fold center front raw edge of skirt over finished edge of bodice, at notch to create a clean finish for the center front of skirt. Sew. Turn dress right side out.
- 13) Secure hem using a hand stitch or machine.
- 14) Fit dress to doll. Using pattern markings as a guide, mark placement for 5 snap sets and mock buttons on the front of dress and for the sleeve cuffs. Remove dress from doll; secure snaps and buttons into place. Give dress a final pressing and fit to doll.

Shining Hour for 17" Deeanna



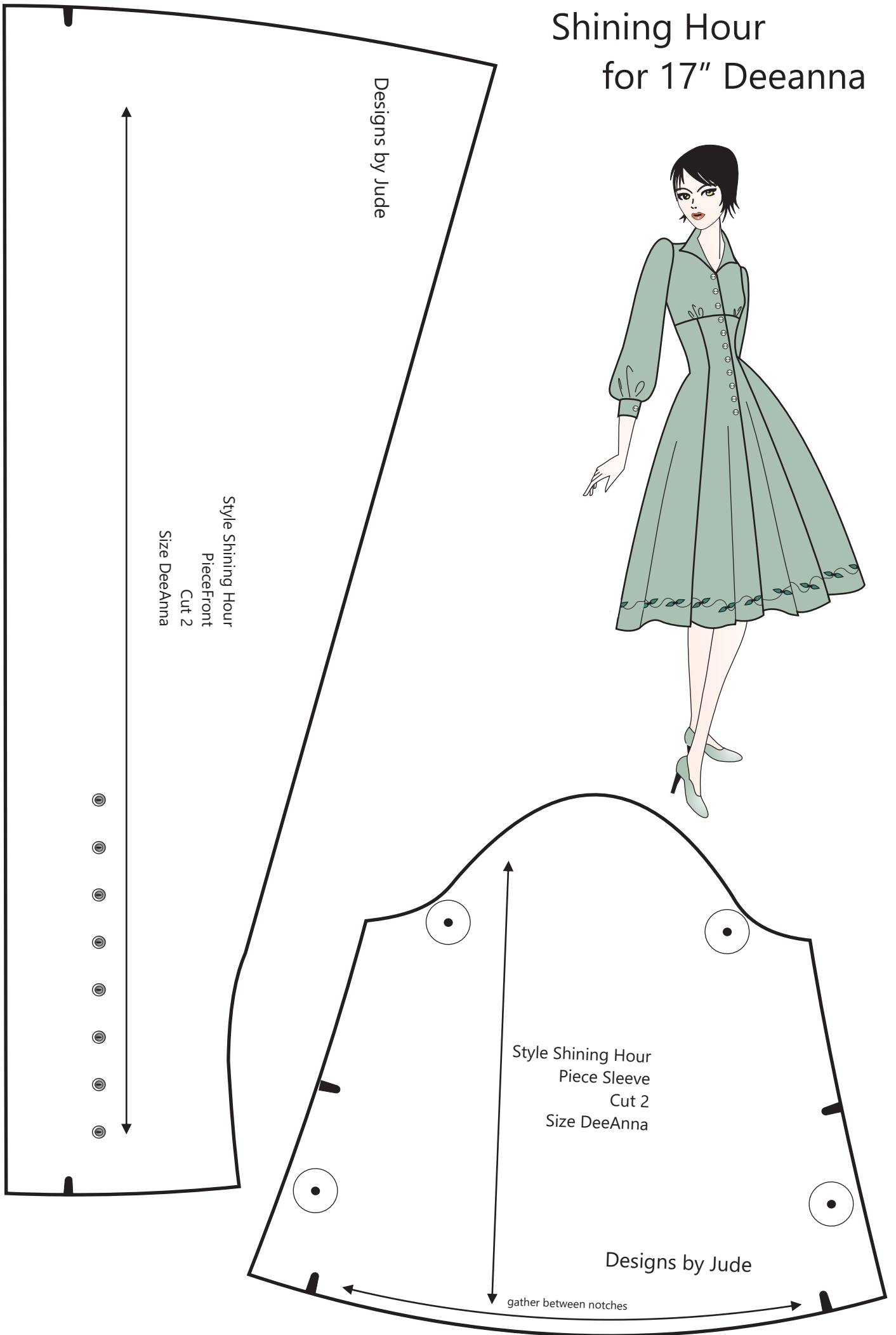
Designs by Jude

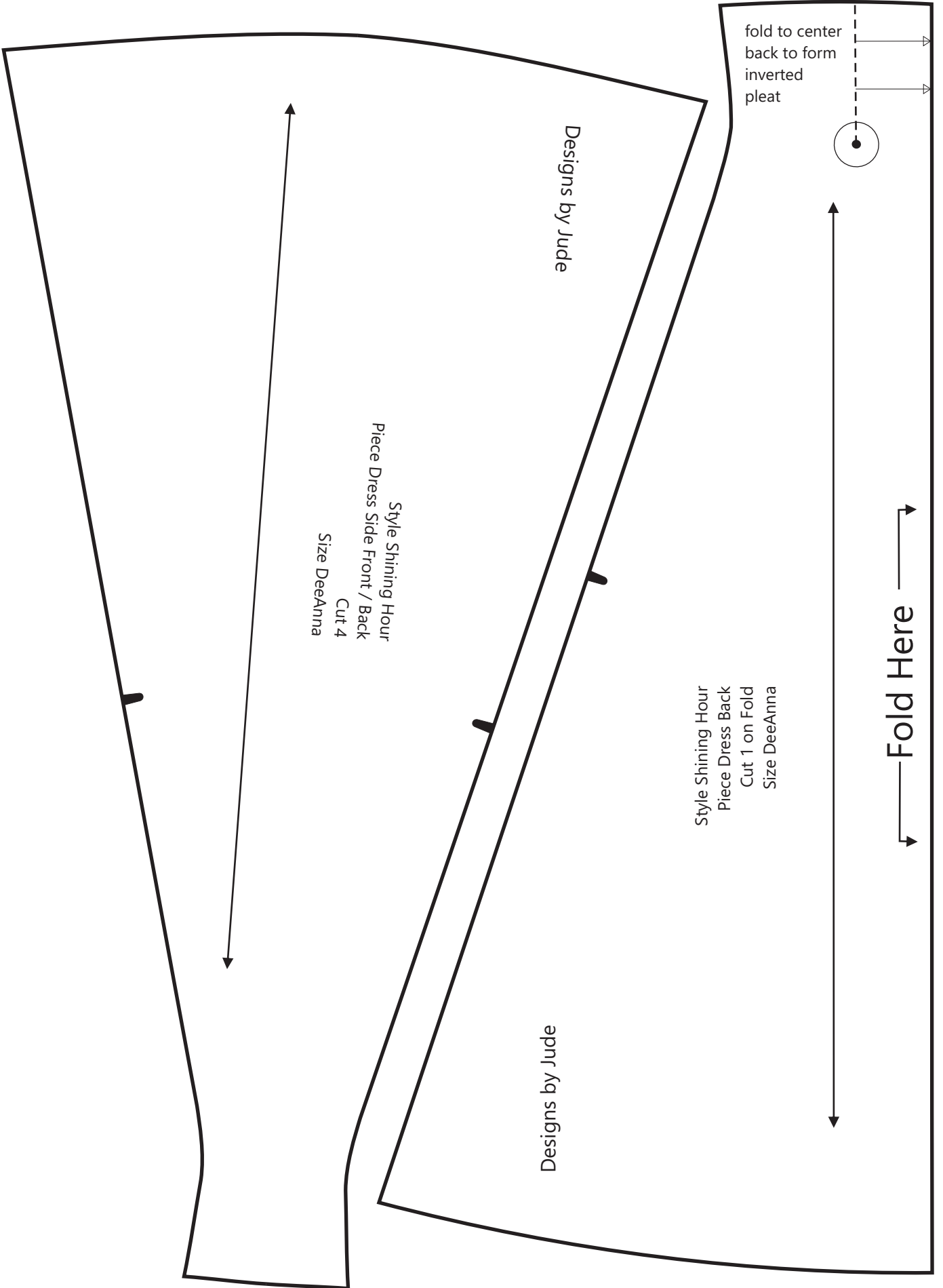
Style Shining Hour
Piece Front
Cut 2
Size DeeAnna

Style Shining Hour
Piece Sleeve
Cut 2
Size DeeAnna

Designs by Jude

gather between notches





Designs by Jude

Style Shining Hour
Piece Dress Side Front / Back
Cut 4
Size DeeAnna

Designs by Jude

Style Shining Hour
Piece Dress Back
Cut 1 on Fold
Size DeeAnna

fold to center
back to form
inverted
pleat



←—————→
Fold Here
←—————→

Designs by Jude

Style Shining Hour
 Piece Cuff
 Cut 2
 Size DeeAnna

Style Shining Hour
 Piece Bodice Back
 Cut 2
 Size DeeAnna

Designs by Jude

gather between notches

Style Shining Hour
 Piece Bodice Front
 Cut 4
 Size DeeAnna

Designs by Jude

Fold Line
 Stitch Line - - - - -
 Grain Line \longleftrightarrow
 Notch ◐ Dot ● Snap ⊙

Seam allowance of 1/4" is already included in the dimensions of the pattern