

A few notes about PDF patterns from Designs by Jude. . . .

This PDF pattern requires legal size paper (8.5" x 14") or A4 size paper (8.27" x 11.69", 210mm x 297mm). It will **not** print on standard letter.

Patterns containing larger pieces will need to be taped together before cutting out the fabric.

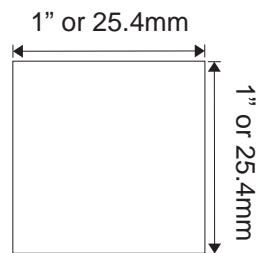
Be advised that this document needs to be printed to it's original scale. Please ensure that the printing options below are **not** selected.

Do Not: Rotate and Center, Fit to Page, Reduce to Fit or adjust the scale of this document.

Refer to the scale marker below to ensure that this copy is printed at the correct scale.

This PDF pattern is not licensed for commercial use and may not be shared, duplicated or distributed.

2016 Designs by Jude, All RIGHTS RESERVED. Personal use only. Not licensed for commercial use.



Designs by Jude

www.fletcherpatterncompany.com



So Chic
for Ellowryne

Designed by
Gary Fletcher

Ew124
\$12.95 US

2009 Designs by Jude, All RIGHTS RESERVED. Personal use only. Not licensed for commercial use.

Designs by Jude

So Chic

For Ellowyne

Notions and Fabric

Fabric: Brocades, satins, silk dupioni, cottons. Envelope illustration shows gown in vintage brocade.
Lining: cotton batiste, china silk

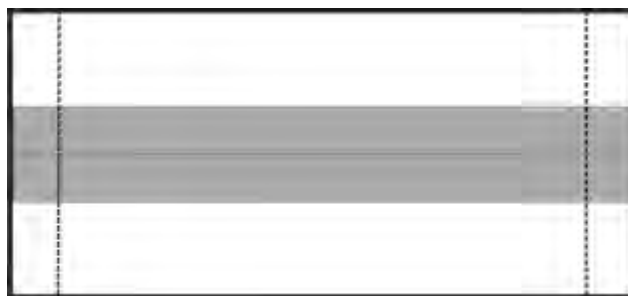
Notions: Matching thread, matching 7" dolls zipper, bow or rosette for center of collar.

General Cutting and Marking Directions

1. Lay out all pieces following grain lines on pattern. Grain lines are marked with a straight line with arrow on each end. Cut the number indicated on the pattern.
2. Cut notches no deeper than 1/8" or use disappearing marker. Seam allowances are 1/4" unless otherwise noted on the pattern or in the instructions.
3. When interfacing, use a fusible in the lightest possible weight and press to the fabric before marking and cutting out the pieces.
4. Surging seams creates bulk and is not recommended unless otherwise indicated in the directions. Fray check or similar product should be used on raw edges where fray is a concern. If your fabric doesn't ravel or fray or is lined there is no need to use anything.

Sewing Directions

1. With right sides together sew dress side fronts to dress front matching notches and easing curves into place. Clip curves and press seams open. Repeat for lining.
2. With right sides together sew dress side backs to dress side fronts along raw edges. Clip curve and press seams open. Repeat for lining.
3. With right sides together sew dress backs to dress side backs along raw edges. Clip curves and press seams open. Repeat for lining.
4. With right sides together sew top raw edge of lining to dress, matching seams. Clip curves and grade allowance. Turn seam and press flat.
5. With right sides together sew raw edges of dress backs from bottom raw edge up to dot. Repeat for lining. Press seams open and zipper openings in dress and lining flat with wrong sides together.
6. With right sides together fold long edge of collar over and sew raw edges leaving the space between notches open. Roll seam to the center of collar lengthwise and press seam and opening flat. Sew side raw edges of collar. Note illustration below.

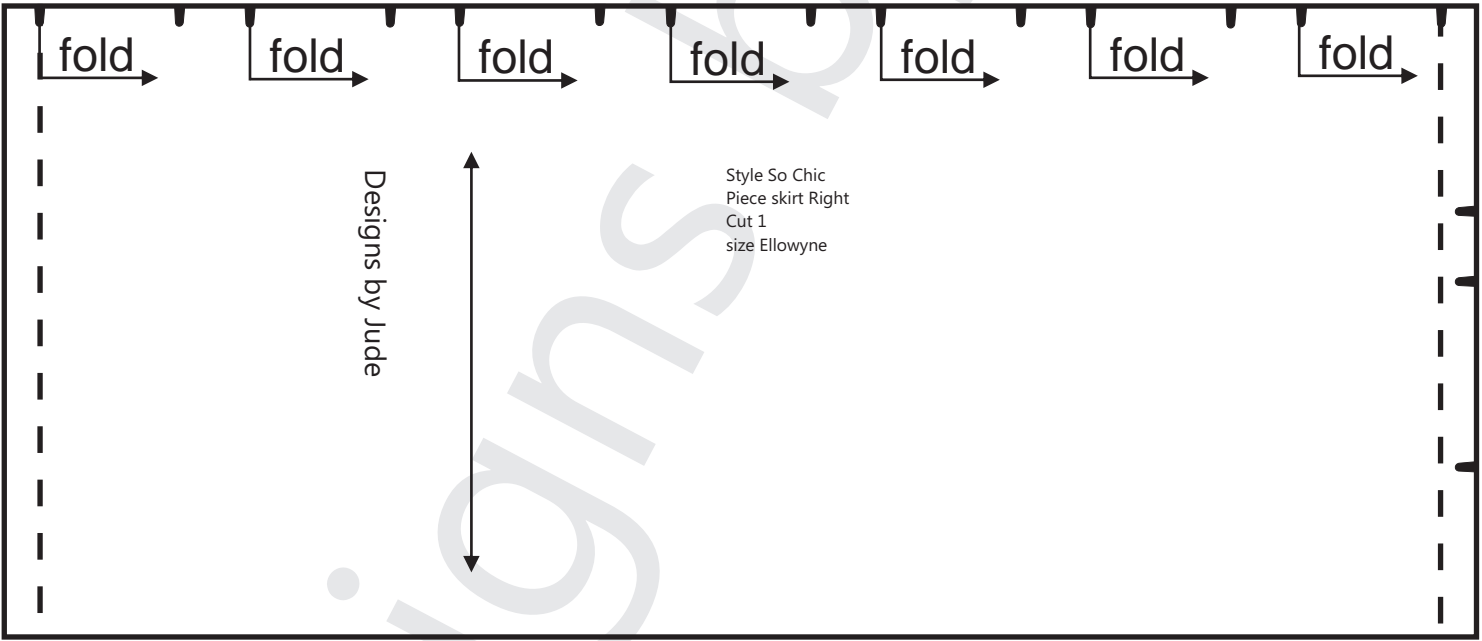
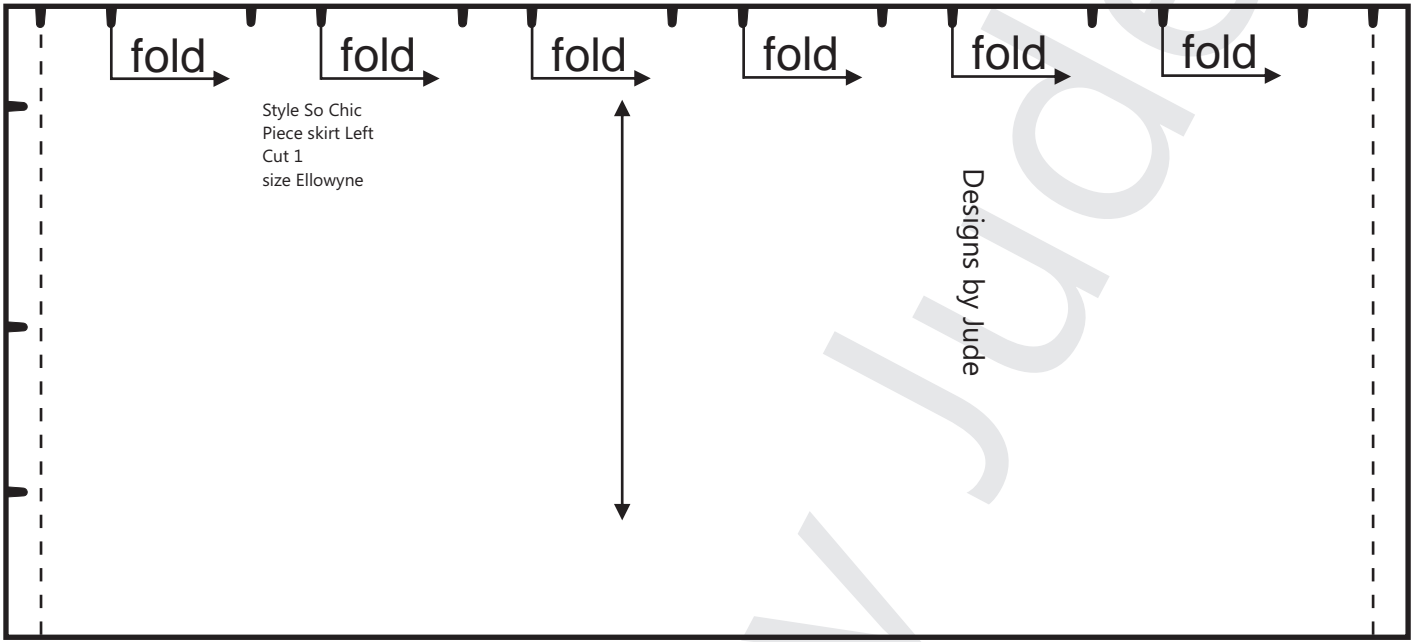


7. Turn collars right side out and press flat. Collars are cut on the bias and should naturally curve.
8. Set zipper into back dress opening using a machine stitch or hand prick stitch. A hand prick stitch using a single strand of thread is the couture method of setting zippers and may be an easier method for you. Top of zipper stops should be placed directly on the seam where top of dress and dress lining meet. Clip approx. 1/2" of zipper tape beyond stops. This area of tape will extend into the dress lining and will be hidden when the dress lining is secured to the zipper tape.

9. Turn dress wrong side out and secure edge of dress lining along zipper opening to zipper tape. Be sure to leave zipper teeth exposed as not to interfere with their operation. With wrong sides together turn bottom raw edge of dress lining under $\frac{1}{4}$ " and press.
10. With right sides together sew pleated skirt to bottom raw edge of dress, matching back seam of skirt and dress. Press seam up, away from pleats. Turn dress wrong side out and secure bottom folded edge of dress lining over bottom seam allowance, using a running hand stitch. Press lining smooth and turn dress right side out.
11. With open side of collar facing right side of top edge of dress, pin collars into place with top edge of collars approx. $\frac{1}{16}$ " above top edge of dress. Butt ends of collar together at the front center of top edge of dress and match other ends of collars to back zipper edge of dress, butting collars just to the zipper teeth. Secure collars to dress using a small running hand stitch. The collar will not be attached to the areas over shoulders.
12. Position and secure rosette or bow to top center front of collars.
13. Fit dress to doll and give one final pressing using a clothes steamer.

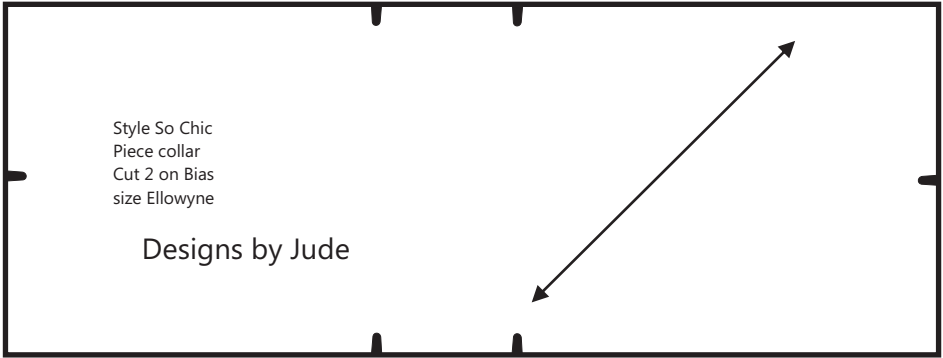
www.fletcherpatterncompany.com

Designs by Jude



Fold Line
Stitch Line - - - - -
Grain Line ↔
Notch ● Dot ○ Snap ⊗

Seam allowance of 1/4"
is already included in the
dimensions of the pattern



Designs by Jude

